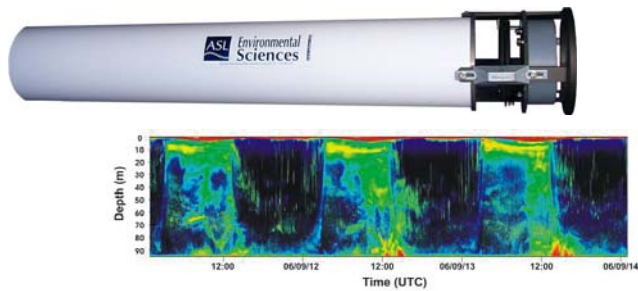


BIO – BULLETIN

Planet Ocean has gathered together the world's leading providers of Biogeochemical instrumentation under one roof. We bring you news of exciting new instruments from each of these premier manufacturers.



AWCP- ACOUSTIC WATER COLUMN PROFILER NEW MULTI-FREQUENCY VERSION

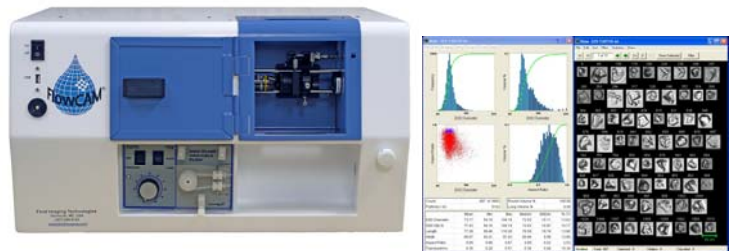
The ASL, AWCP, acoustic water column profiler, is now available with multiple frequencies. This builds on the success of the single frequency unit, allowing spatial and temporal monitoring of individual species in the water column. Suitable for mounting on the seabed, a taut mooring, on surface buoys or AUV's the AWCP now provides researchers with a tool that can give them access to data never previously available

www.planet-ocean.co.uk/asl

FlowCAM – IMAGING FLOW CYTOMETER

FIT have released the latest version of their exciting FlowCAM, real-time imaging flow cytometer. FlowCAM® is a state-of-the-art instrument for rapid monitoring of particles in fluid. FlowCAM combines the capabilities of flow cytometry and microscopy—providing an order of magnitude improvement over each. FlowCAM automatically counts, images, and analyses the cells in a discrete sample or a continuous flow, providing significantly increased data collection, instantly.

www.planet-ocean.co.uk/FIT



SUNA - NITRATE ANALYSER

Satlantic have produced the successor to their popular ISUS in-situ Nitrate Analyser, SUNA. (Submersible Ultraviolet Nitrate Analyser). Suna is a stripped down version of the latest ISUS V3, has no internal logger and is provided in a shallower pressure case. A new optical path, improves anti bio fouling as does the addition of a pumped flow cell option, which means that the sensor can be more easily used as a surface instrument.

Satlantic also provide a wide range of passive optical radiometers and profilers along with comprehensive systems for overall water quality monitoring. Also take a look at their FIRE (Fluorescence Induction and Relaxation System) for chlorophyll fluorescence in photosynthetic organisms.

www.planet-ocean.co.uk/satlantic



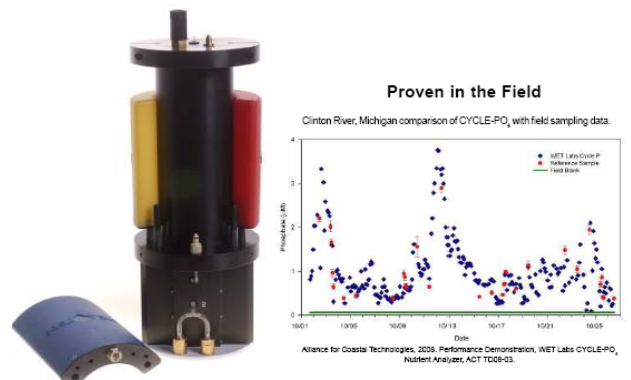
CYCLE-PO₄ – IN-SITU PHOSPHATE ANALYSER

WETLabs have introduced their latest Phosphate Analyser CYCLE-PO₄. This beautifully designed instrument allows simple, unattended gathering of phosphate concentrations for up to 3 months. It has its own internal logger or it can be used as a sensor on a multi-parameter rig.

The instrument incorporates a clever system of recyclable reagent cartridges that are fitted simply and quickly, and are colour coded and mechanically protected against incorrect fitting.

WET Labs produce a growing range of optical instruments including fluorometers, transmissometers, scattering sensors, and spectrophotometers that reliably provide accurate data about the Inherent Optical Properties of the aquatic environment:

www.planet-ocean.co.uk/WetLabs



REQUEST A DATA SHEET NOW OR VISIT www.planet-ocean.co.uk FOR FURTHER INFORMATION