



Planet
Ocean Ltd

The surest measure of a changing world



DB-125 MODULAR DATA BUOY PLATFORM



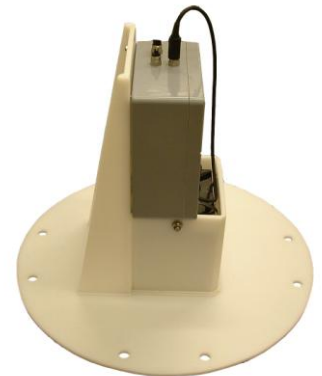
The DB-125 is shown here with solar powered navigation light and 4 x 10W solar panels.

The DB-125 Data Buoy system is designed for sheltered water operations to typically 50m depth where instrumentation is required to be deployed near the surface and can be either permanent or temporary platforms.

The system is modular and can be supplied with integral solar power supply, self contained solar powered navigation light, St Andrews cross top mark and antenna/sensor bracket, choice of telemetry system and message stencilling. Data buoys can also be supplied in standard port or starboard lateral configurations if required.

The buoys are fitted with a through hull fairlead tube so that instruments can be deployed and recovered without cables being exposed over the hull and without recovering the buoy and standard frames are available which support, acoustic modems, CTD's, etc.

The DB-125 is fitted with a hollow, removable tower section that houses the radar reflector and can house sensitive electronics modules and batteries. The buoys have flat bottoms and are free standing with a single point recessed mooring eye. A standard option is a pre-ballasted multi-point mooring keel. This allows all rope moorings to be used in sensitive acoustic applications, and/or dual, triple or quad mooring arrangements to prevent rotation of the buoy should this be desirable.



Polyethylene Chassis with DBT-1 module and battery

Solar panels are support upon the flat face of the superstructure and are less vulnerable to cracking from wave impact.

The floatation unit, and other key components, are manufactured from rotationally moulded polyethylene with optimum E.S.C.R. (Environmental Stress Crack Resistance) Pre-coloured virgin polymers, with high UV stability Robust wall thickness collars filled with marine safety approved close-cell foam and are virtually unsinkable. Steel work is galvanised, as standard, to BS EN ISO 1461-1999.

Specifications:

Diameter mm	1250	Solar Panels	Up to 4 x 10W (4 x 20W to special order)
Hull depth mm	450	Nav light	Self contained solar. Typ Gp5 ev 20 amber, range 2nm in UK.
Typical water line above base mm	250	Radar reflector	Internal Echomax MIDI giving peak RCS24m ²
Overall height with X and lantern mm	2256	Fairlead deployment tube	128mm ID 160 mm OD x 560mm long
Overall height with X and lantern mm with pre-ballast keel	2326		
Overall Wt Kgs	100		
Overall Wt with pre-ballast keel Kgs	180		
Typical Chain size mm	16/19		
Max weight of Mooring Kgs	145		
Minimum weight of mooring Kgs	75		
Sinker Weight typical in water Kgs	450		



DB-125 iss F JUN 2009