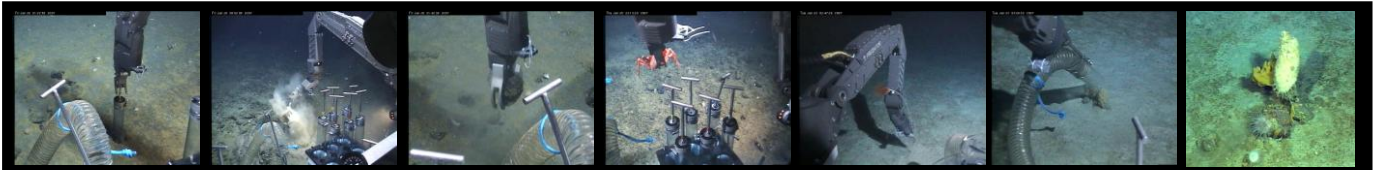


EE - PC - 1 EE - PC - 2 ROV PUSH CORER



The Elkins EE-PC-1 & EE-PC-2 ROV Sediment Coring Devices were designed at NOC Southampton and are manufactured under licence to the highest standards by underwater engineering specialist Elkins Oceanic.

The devices are designed to be operated by ROV's to obtain sediment cores in shallow or deep water applications.

Available in two standard sizes, the push corers consist of a Perspex tube, one way valve and ROV T-bar handle. Traditionally sediment coring is undertaken remotely from surface vessels, however use of an ROV facilitates the ability to take multiple and high quality cores from highly targeted locations with specific seabed types or habitats, for biological, physical or chemical analysis.

The corers comprises two separate parts, the core tube with T bar and the corer housing. The transparent push core is manipulated using the T bar handles and pushed into the sediment of interest. A one way valve at the top of the sample chamber allows water to escape as it is replaced by the sediment core. Upon removal from the sediment, the sample is returned to its housing. The housing is manufactured with a flared opening to allow for easy alignment of the returning core tube. At the base of the housing is a tapered, rubber plug which seals the sample within the assembly. Upon recovery to the surface, the T bar and valve are simply removed and the core with its rubber plug are removed from the housing by a simple twist fitting at the base.

Special configurations of the design are available for specific missions; please contact us to discuss your requirements.



Features:

- Stainless steel and plastic non corrosive materials
- Pressure balanced for full ocean depth use.
- Rugged – Robust –Reliable
- Two standard sizes available
- Simple operation



Specifications:

Model	EE-PC-1	EE-PC-2
Material	ABS, PVC glass Clear, Stainless Steel, Rubber.	ABS, PVC glass Clear, Stainless Steel, Rubber.
Maximum operating depth	6000m	6000m
Weight in air (Corer)	0.685 Kg	0.92 Kg
Weight in air (Complete)	1.775 Kg	2.4 Kg
Overall length (includes T bar)	570 mm	770 mm
Core length	280 mm	480 mm
Core diameter	55mm	81 mm
Core volume	0.665 L	2.47 L

REF – EE-PC1 &2 iss A March 2008